

November 18, 2021

Lease / Project #100295

Description: Cut and Mulch cedar trees and underbrush

Legal: SW/4 SEC 36-11N-3E1M

County: Pottawatomie

Dear Vendor:

Commissioners of the Land Office is inviting written bids for the following:

A Soil Conservation Project Request/Bid Solicitation Form is enclosed for the above-referenced project located on Commissioners of the Land Office property. All bids received will be evaluated on a "Lowest Responsible" bid. Bids must be returned to the office in Oklahoma City on or before December 16th, 2021 by 2:00 pm., to be considered for this project.

If you are interested in being considered for this project, complete the enclosed Project Request/Bid Solicitation Form. You must fill in the units, unit price, totals, and project totals fields on the form. Incomplete forms will not be considered. If you should have any questions about this bid, you should consult with Roger Knauss 580-654-1190 before sending in your bid.

If you are selected as "Lowest Responsible" bidder; current general liability insurance information along with worker's compensation or insurance document showing an exemption from workers compensation will be required. There is a new requirement in place for all vendors who are under the workman's compensation exempt insurance. You are now required to file a workman's compensation form with the Workman's Compensation Commission. The new form is valid for two years instead of the previous lasting one year. This will replace any prior forms that we have on file. You can file on line at www.ok.gov/wcc; (CC-Form 36A).

Bids will be accepted until the Date and Time specified above. Late Bids will not be accepted.

Please mail your bid to 204 N. Robinson, Suite 900, Oklahoma City, OK 73102, or if you would like to deliver in person, please note our office hours are Monday through Friday, 8:00 AM to 4:45 PM.

The requirements of the proposed contract for construction are described within this Solicitation, and the Solicitation will become a part of any resultant Contract. Bidder will perform work in compliance with all applicable codes, standards, ordinances, and laws. The issuance of this Solicitation does not guarantee that the State of Oklahoma will enter a contract and the State reserves the right to reject all bids.

In preparing your bid, please review the attached documents and comply with instructions given:

- Submit your bid using the form provided.
- The project will be considered complete after the supervising Real Estate Management Specialist certifies the specifications of the enclosed bid have been met.
- If you are not interested in being considered for this project, please return the form with "No Bid" written on it. This will indicate that you do not wish to bid at this time but may like to bid on future projects.

If you have any questions about this project, contact me at 405-521-4149. Be sure to check our website at www.clo.ok.gov for questions and answers that arise during the bidding of this project.

Sincerely,


Tonja DeFatta, CPO

Real Estate Management Division

Tonja.defatta@clo.ok.gov

**COMMISSIONERS OF THE LAND OFFICE
SOIL CONSERVATION PROJECT REQUEST/BID SOLICITATION**

LESSEE: *Dace Dockrey*

DATE: 9/21/2021

LEASE NO: 100295

COUNTY: Pottawatomie

LEASE TERM: 2019-12/31/2023

LEGAL: SW/4 SEC 36-11N-3E1M

DIRECTIONS TO JOB SITE: From the intersection of I-40 Kickapoo St. in Shawnee, ½ mile south, 1 mile west on 45th street on north side.

SUPERVISING REMS: Roger Knauss

ITEM OR PRACTICE (REM ONLY)	CODE	UNITS	UNIT PRICE	TOTALS
<i>Cut and Mulch cedar trees and underbrush</i>		<i>Job</i>	<i>Job</i>	
JOB TOTAL	➡	➡	➡	

***Please write "NO BID" in the "TOTALS" column if you do not wish to bid, sign and return the bid form to the OKC office.**

Project Specifications: Cut and mulch cedars and underbrush. The trees and underbrush are scattered throughout the lease, mostly on the north end. Inspection by the contractor before bidding is strongly encouraged.

THIS JOB MAY REQUIRE YOU TO SUBMIT REFERENCES UPON REQUEST

Bid according to units provided above. If you should choose to give a flat rate instead of bidding by unit price, CLO will not be able to adjust the cost up or down if actual units should change. By Statute 580" 16-3-7, the CLO cannot pay for mileage. "Vendor shall include travel and all associated expenses in the total acquisition price." Do not quote travel and any associated expenses separately on the bid request form.

REMS *Roga Knauss* Date 9/21/2021

VENDOR ONLY:

1. The undersigned, being familiar with the local conditions affecting the cost of the work, with the Solicitation for Bids and in accordance with the provisions thereof, hereby proposes to furnish all labor, materials and equipment necessary for the sums listed herein.
2. By submitting a bid for services, the bidder certifies that they, and any proposed subcontractors, are in compliance with 25 O. S. §1313 and participate in The Status Verification System. The Status Verification System is defined in 25 O. S. §1312 and includes but is not limited to the free Employment Verification Program (E-Verify) available at www.dhs.gov/E-Verify.
3. The bidder also certifies that they are in compliance with the State of Oklahoma Governor's Executive Order 2012-01, filed February 6, 2012 and effective July 1, 2012, that the use of any tobacco product shall be prohibited on any and all properties owned, leased or contracted for use by the State of Oklahoma, including but not limited to all buildings, land and vehicles owned, leased or contracted for use by agencies or instrumentalities of the State of Oklahoma.
4. In submitting the bid, it is agreed that this bid may not be withdrawn for a period of thirty (30) days after the date bids are due. Work is to start within ten (10) days of notification to proceed by CLO.

Company/Business name _____ Vendor signature _____ Date _____

-----FOR OFFICE USE ONLY-----

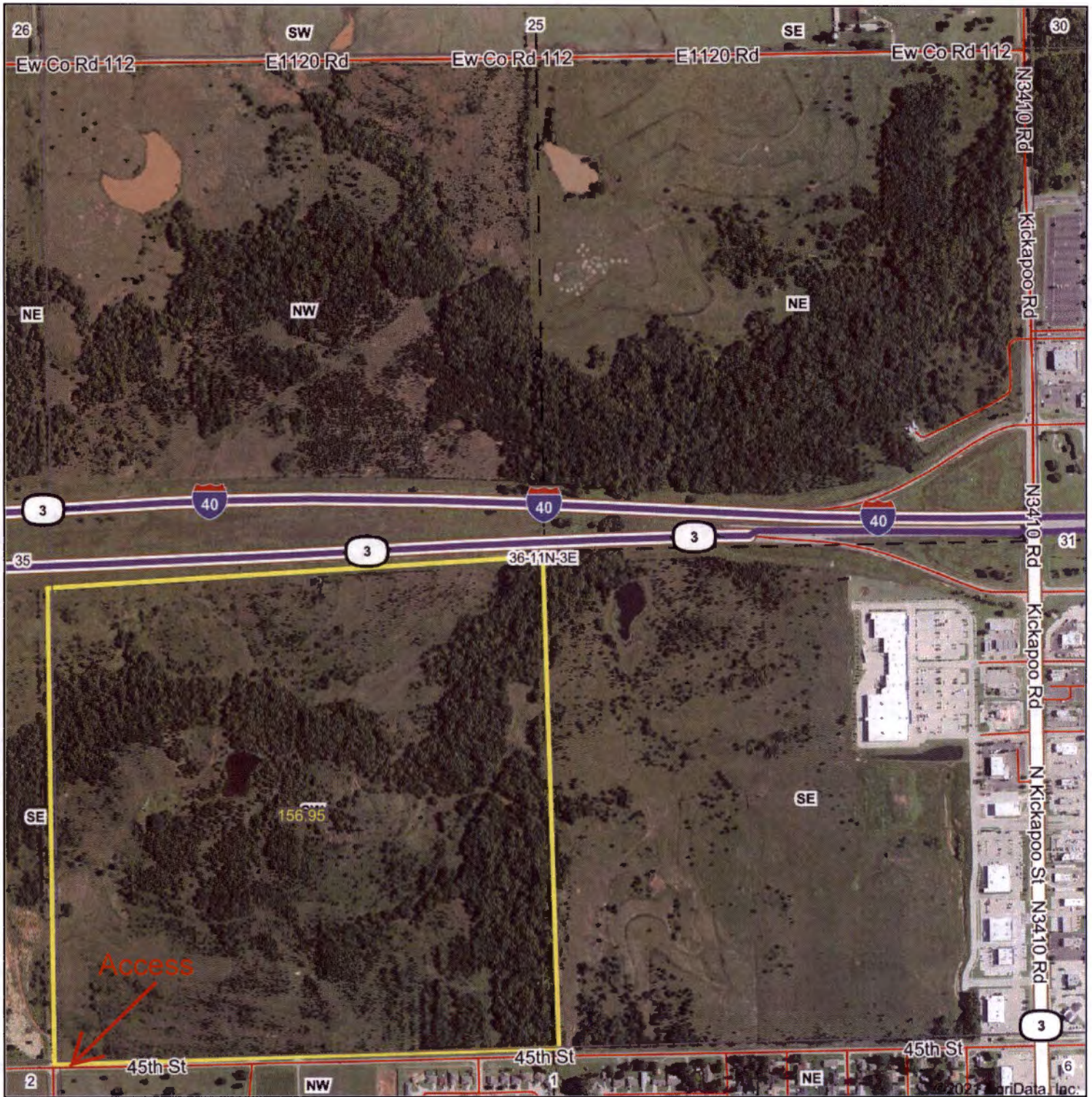
Work completed in last five years: none

Roga Knauss 11/22/2011
Asst. Director Date

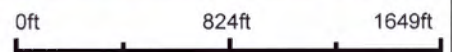
Dir., REM Division Date

Lease # 100295
Dace Dockrey

Aerial Map



Map Center: 35° 23' 1.16, -96° 56' 18.61



36-11N-3E
Pottawatomie County
Oklahoma

Maps Provided By:

CUSTOMIZED ONLINE MAPPING
© AgriData, Inc. 2021 www.AgriDataInc.com



9/21/2021

SEEALED BID ENVELOPE
DO NOT OPEN

Commissioners of the Land Office
204 North Robinson, Suite 900
Oklahoma City, OK 73102

SOIL CONSERVATION

#

OPENING DATE

100295

12/16/2021